

ECO  
COTTON  
RECYCLED  
PRODUCT  
SUSTAINABLE  
INNOVATION







About Us	4
Rethinking Recycled	6
The CYCLO System	8
Top Fashion Brands Globally	11
Circular Supply Chain	12
Men's Clothing	
Top Series	16
Bottom Series	29
Women's Clothing	
Top Series	33
Bottom Series	42



# CONTENT

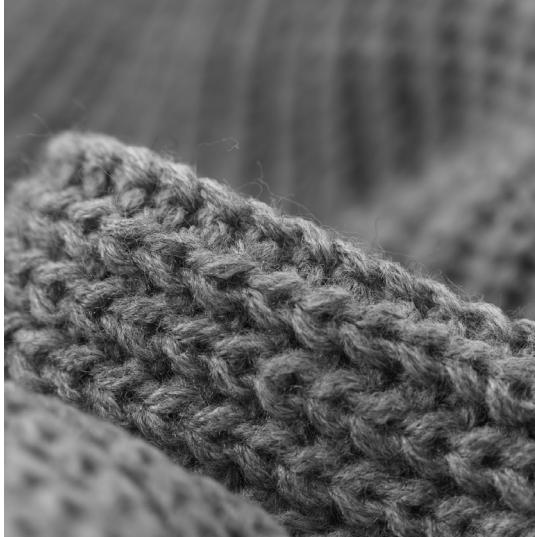
A close-up photograph of a woman lying down, her face partially obscured by lush green fern fronds. Her eyes are closed, and her expression is peaceful. A hand is visible at the top, gently holding the ferns. The background is filled with more ferns, creating a dense, natural setting. The lighting is soft and natural, highlighting the textures of the leaves and the woman's skin.

# As Sustainable As Sustainable Gets

We Partner With Global Fashion Brands to Produce Fibers That Are at Least 50% Recycled and Have a Measurable Environmental Impact.



## TRANSFORMING WASTE, PRESERVING RESOURCES



The textile industry places a heavy burden on our planet's resources. We believe that there is a different way of doing things, one that reduces our industry's environmental footprint and makes the most of the limited resources available. We want to avoid valuable, dyed cotton from going to waste. That is why we mechanically recycle the textile waste from the garment manufacturers in Bangladesh into new fibers and yarns, without using water, chemicals or dyes.

We are CYCLO® recycled fibers.



# No dye, water or chemicals —————



*rethinking recycled.*

The final product is a brand new, colored yarn, produced without using any dyes, water or chemicals. This makes CYCLO® recycled fibers one of the most environmentally friendly textile alternatives!



“

WE BELIEVE THAT THERE  
IS A DIFFERENT WAY OF  
DOING THINGS.

”

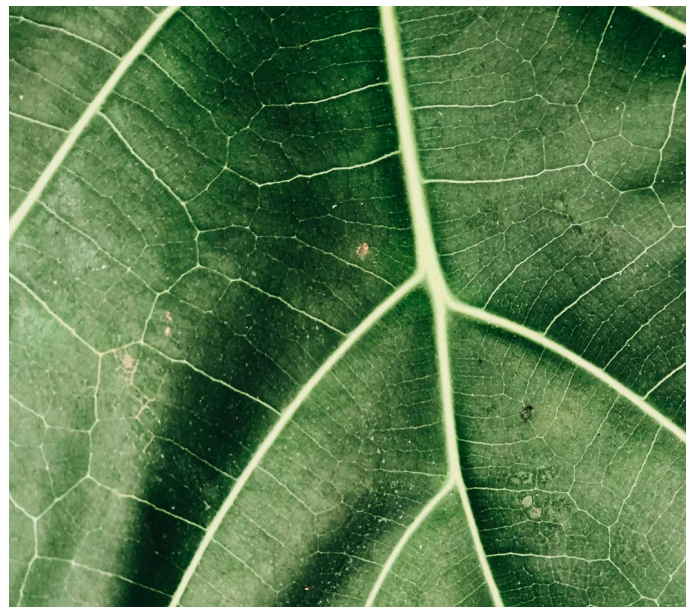






STEP 1

# Analyze.



STEP 2

# Develop.



STEP 3

# Enhance & Learn

## The CYCLO® System

CYCLO® has been developed specifically to provide a global standard for recycled yarn, which is preferred by major international apparel brands and in some cases, perceived as superior to virgin cotton because of the sustainability credentials.



Make it with CYCLO®

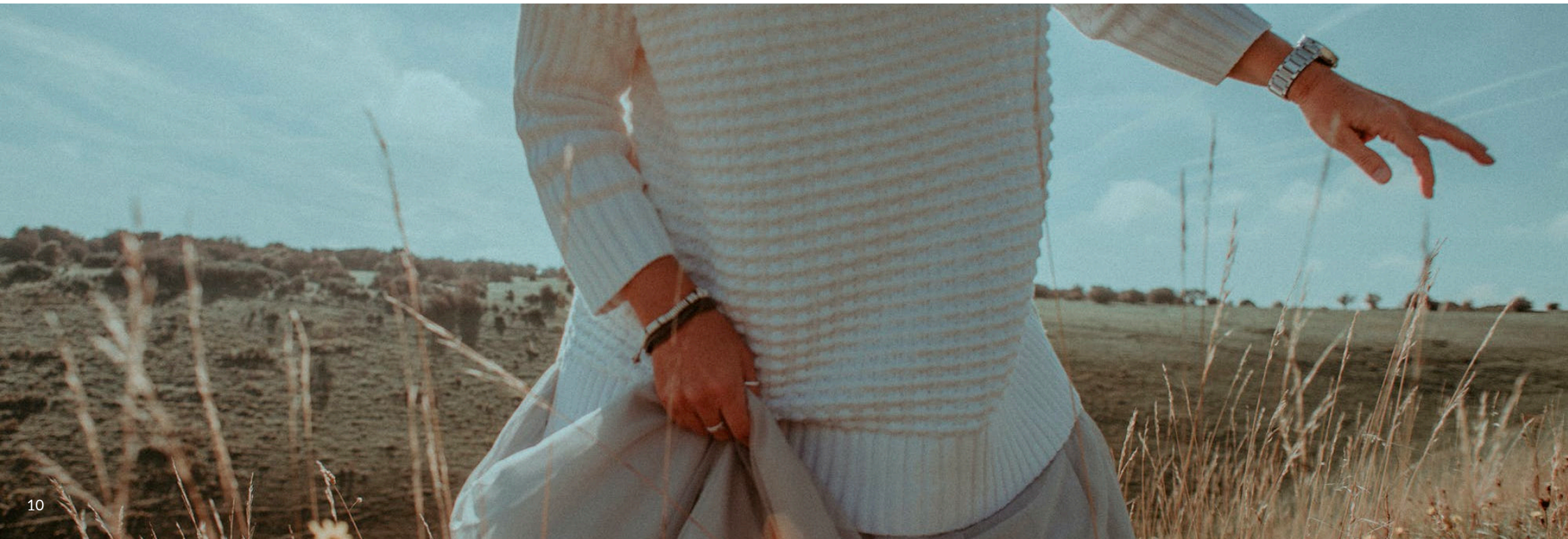
transforming



P R E S E R V I N G



From the moment textile waste is sourced and sorted to every process in between sustainable start to the finish, CYCLO® is dedicated to not only transforming waste but preserving natural resources. Simply put, we make yarn for a better planet. The most widely used products can be made with CYCLO® recycled yarn.





# Trusted by Top Fashion Brands Globally

United Kingdom



France



Germany



Spain



Sweden



Netherlands/Belgium



Poland



Finland



Americas

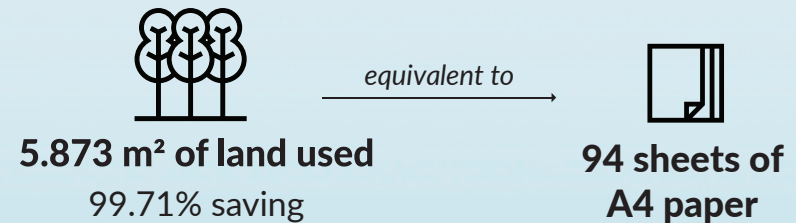
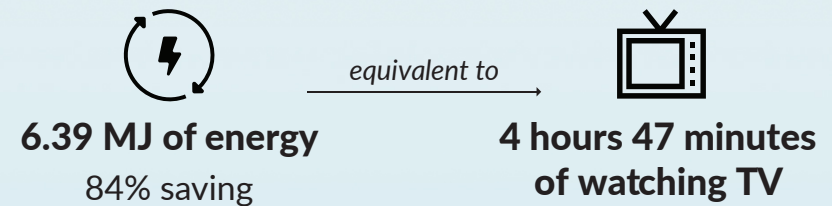
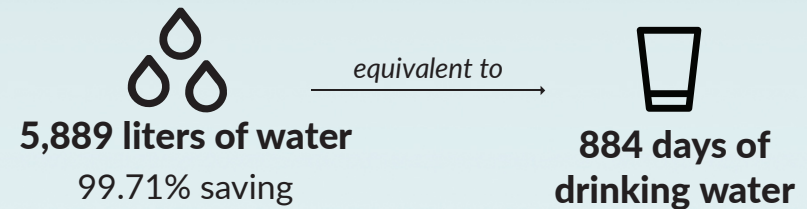
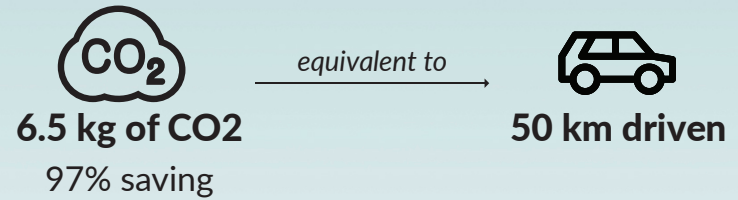


Australia/New Zealand





# 1kg of CYCLO® Recycled Fibers saves up to





# Truly Circular Supply Chain





The earth is like my mother.  
You get punished if you make a mess.

Why do you think this  
planet's called Mother Earth?

---

JESSICA LEE  
AGE 10 | HONG KONG



We've pioneered a closed-loop production system to upcycle pre-consumer textile waste.

We collect the buyer's waste from the manufacturer, recycle it, spin it into yarn, and deliver that yarn back to the manufacturer. The manufacturer then uses it to produce garments, ultimately recycling the buyer's own waste.

# MADE WITH CYCLO®

Textile production today is one of the most environmentally detrimental industries in the world. Producing yarns, fabrics and garments requires a tremendous amount of resources, and creates a lot of textile waste in the process.

SIMCO Spinning & Textile's mission is to turn this waste into high quality fibers and yarns that can be used to create brand new garments, home textiles and accessories. We created CYCLO® Recycled Fibers as a brand to offer one of the most sustainable alternatives to conventional raw materials.

We continue to invest in new technologies and developments to widen our range of applications, improve quality and bring innovation.

We continue to invest in new technologies and developments to widen our range of applications, improve quality and bring innovation.



# Menswear

T O P   S E R I E S





**STYLING**  
Men's Shirt

**COMPOSITION**  
70% Recycled Cotton  
+ 30% Recycled Polyester

**FABRIC DETAILS**  
Fabric Type: Chambray Fabric,  
Count: 16×16 | 68×60  
Weight: 158 (±5%) GSM

**TREATMENT**  
Normal Wash

**COLOUR**  
Olive Melange





**STYLING**

Men's Hoodie

**COMPOSITION**

70% Recycled Cotton  
+ 30% Ecovero Viscose

**FABRIC DETAILS**

Fabric Type: French Terry,  
Count: Front: 20/1, Back: 20/1  
Weight: 250 (±5%) GSM

**TREATMENT**

Normal Wash

**COLOUR**

Candy/Dijon 402

PIAZZA ITALIA







**STYLING**

T - Shirt

**COMPOSITION**

50% Recycled Cotton  
+ 50% Recycled Polyester

**FABRIC DETAILS**

Fabric Type: Single Jersey,  
Count: 30/1  
Weight: 170 (±5%) GSM

**TREATMENT**

Normal Wash

**COLOUR**

Olive based all over camo print

**CYCL**<sup>®</sup>  
**DEVELOPMENT**



**STYLING**

Long Sleeve T-Shirt

**COMPOSITION**

60% Recycled Cotton  
+ 40% Recycled Polyester

**FABRIC DETAILS**

Fabric Type: Single Jersey,  
Count: 24/1  
Weight: 200 (±5%) GSM

**TREATMENT**

Normal Wash

**COLOUR**

White 001/Marshmallow

**HYBRID**  
A P P A R E L





**STYLING**

T-Shirt

**COMPOSITION**

50% Recycled Cotton  
+ 50% Organic Cotton

**FABRIC DETAILS**

Fabric Type: Single Jersey,  
Count: 24/1  
Weight: 185 (±5%) GSM

**TREATMENT**

Normal Wash

**COLOUR**

Black Melange

**STANLEY/STELLA**





**STYLING**  
Shirt

**COMPOSITION**  
70% Recycled Cotton  
+ 30% Recycled Polyester

**FABRIC DETAILS**  
Fabric Type: Chambray Fabric,  
Count: 16×16 | 72×58  
Weight: 165 (±5%) GSM

**TREATMENT**  
Normal Wash

**COLOUR**  
Beige 401 & Off-White 002

**CYCL**<sup>®</sup>  
**DEVELOPMENT**





**STYLING**

Hi-Neck Pullover Sweater

**COMPOSITION**

70% Recycled Cotton  
+ 30% Recycled Polyester

**FABRIC DETAILS**

Fabric Type: Jersey Stitch  
Count: 16/2, Gauge: 7GG, Ply: 2

**TREATMENT**

Normal Wash

**COLOUR**

Navy 202 & Beet Red 500 Twist





**STYLING**

Overall Jacket

**COMPOSITION**

70% Recycled Cotton  
+30% Recycled Polyester

**FABRIC DETAILS**

Fabric Type: Woven  
Count: 16 X 10 | 96 X 48  
Weight: 500 GSM

**TREATMENT**

Normal Wash

**COLOUR**

Black 100







**STYLING**

Sweatshirt

**COMPOSITION**

60% Recycled Cotton  
+ 40% Recycled Polyester

**FABRIC DETAILS**

Fabric Type: Fleece  
Count: Front: 20/1, Binder- 20/1,  
Back: 20/1  
Weight: 288 (±5%) GSM

**TREATMENT**

Normal Wash

**COLOUR**

Military Olive



**STYLING**

Sweater Pullover

**COMPOSITION**

60% Recycled Cotton  
+ 40% Recycled Polyester

**FABRIC DETAILS**

Fabric Type: French Terry,  
Count: Front: 20/1, Back: 12/1  
Weight: 260(±5%) GSM

**TREATMENT**

Normal Wash

**COLOUR**

Anthracite 101,  
Grey 103, Navy 202





**STYLING**

Round Neck Pullover Sweater

**COMPOSITION**

70% Recycled Cotton  
+ 30% Recycled Polyester

**FABRIC DETAILS**

Fabric Type: Jersey Stitch  
Count: 16/2, Gauge: 7GG, Ply: 2

**TREATMENT**

Normal Wash

**COLOUR**

White 001 & Navy 202 Twist





#### STYLING

Round Neck Pullover Sweater

#### COMPOSITION

50% Post Consumer Wool + 20% Polyester + 10% Nylon + 10% Acrylic + 10% Viscose

#### FABRIC DETAILS

Fabric Type: Jersey Stitch

Count: 12/2, Gauge: 7GG, Ply: 2

#### TREATMENT

Normal Wash

#### COLOUR

Mid Grey (303)

 **CYCLOPRET  
DEVELOPMENT**



# Menswear

B O T T O M   S E R I E S



**STYLING**

Men's Jeans

**COMPOSITION**

Weft: 7/1; 55% Recycled Cotton + 30%  
Virgin Cotton + 15% Recycled Polyester  
Warp: 7/1; 100% Virgin Cotton

**FABRIC DETAILS**

Fabric Type: Woven  
Count: Weft: 7/1 & Warp: 7/1  
Weight: Weight: 12.90 OZs

**TREATMENT**

Dk Wash

**COLOUR**

Indigo

PRIMARK<sup>®</sup>





**STYLING**

Trouser

**COMPOSITION**

70% Cyclo® Recycled Cotton  
+ 30% Recycled Polyester

**FABRIC DETAILS**

Fabric Type: Fleece

Count: Front- 20/1 & Back- 20/1

Weight: 270 GSM

**TREATMENT**

Normal Wash

**COLOUR**

Lt Grey 106

**VEGOTEX**  
INTERNATIONAL





**STYLING**

Men's Jeans

**COMPOSITION**

Weft: 7/1; 55% Recycled Cotton  
+ 30% Virgin Cotton  
+ 15% Recycled Polyester  
Warp: 7/1; 100% Virgin Cotton

**FABRIC DETAILS**

Fabric Type: Woven  
Count: Weft: 7/1 & Warp: 7/1  
Weight: 12.90 OZs

**TREATMENT**

Mid Wash

**COLOUR**

Navy 202

PRIMARK<sup>®</sup>



# Womenswear

T O P   S E R I E S



**STYLING**

Ladies T-Shirt

**COMPOSITION**

60% Recycled Cotton  
+ 40% Recycled Polyester

**FABRIC DETAILS**

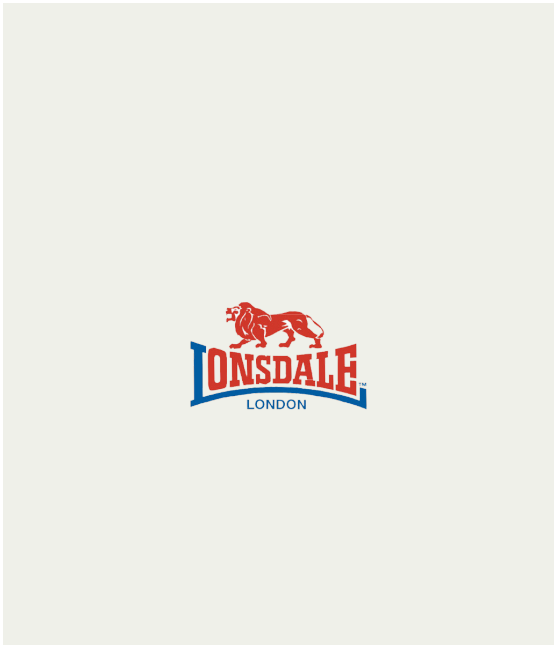
Fabric Type: Single Jersey  
Count: 24/1  
Weight: 175 GSM

**TREATMENT**

Normal Wash

**COLOUR**

Navy 202







**STYLING**

Long Sleeve Pullover

**COMPOSITION**

70% Cyclo® Recycled Cotton  
+ 30% Recycled Polyester

**FABRIC DETAILS**

Fabric Type: Fleece  
Count: Front- 20/1 & Back- 20/1  
Weight: 270 GSM

**TREATMENT**

Normal Wash

**COLOUR**

Rose 600



**VEGOTEX**  
INTERNATIONAL



**STYLING**

Round Neck Pullover Sweater

**COMPOSITION**

70% Recycled Cotton  
+ 30% Recycled Polyester

**FABRIC DETAILS**

Fabric Type: Woven  
Count: Weft: 7/1 & Warp: 7/1  
Weight: Weight: 12.90 OZs

**TREATMENT**

Normal Wash

**COLOUR**

Beige 401

**pimkie**<sup>®</sup>





**STYLING**

Cardigan

**COMPOSITION**

70% Cyclo® Recycled Cotton  
+ 30% Recycled Polyester

**FABRIC DETAILS**

Fabric Type: Shaker Stitch  
Count: 16/2, Gauge: 7GG, Ply: 4

**TREATMENT**

Normal Wash

**COLOUR**

Black 100

**pimkie®**





**STYLING**

Women Pullover

**COMPOSITION**

70% Cyclo® Recycled Cotton  
+ 30% Recycled Polyester

**FABRIC DETAILS**

Fabric Type: Jersey Stitch Count:  
16/2, Gauge: 7GG, Ply: 2  
Feather Nylon: 1 Ply

**TREATMENT**

Normal Wash

**COLOUR**

Cabernet 500,  
Black 100

 **RENNER**





**STYLING**

Women Pullover

**COMPOSITION**

70% Recycled Cotton  
+ 30% Recycled Polyester

**FABRIC DETAILS**

Fabric Type: Jersey Stitch  
Count: 16/2, Gauge: 12GG, Ply: 2

**TREATMENT**

Normal Wash

**COLOUR**

White 001,  
Blue 205, Rose 601

**Woolworth**



**STYLING**

Ladies T-Shirt

**COMPOSITION**

60% Recycled Cotton  
+ 40% Recycled Polyester

**FABRIC DETAILS**

Fabric Type: Single Jersey  
Count: 24/1  
Weight: 145 GSM

**TREATMENT**

Normal Wash

**COLOUR**

Cloud







**STYLING**

Woman Pullover

**COMPOSITION**

70% Recycled Cotton  
+ 30% Recycled Polyester

**FABRIC DETAILS**

Fabric Type: Jersey Stitch  
Count: 16/2, Gauge: 12GG, Ply: 2

**TREATMENT**

Normal Wash

**COLOUR**

Anthracite 101,  
Denim 203, Grey 103,  
Lt. Grey 105



# Womenswear

B O T T O M   S E R I E S





**STYLING**

Ladies Denim Pant

**COMPOSITION**

70% Recycled Cotton

+ 18.5% Tancel

+ 11.5% polyester

**FABRIC DETAILS**

Fabric Type: Denim

Count: Weft: 7/1, Wrap: 7/1,

Weight : 13.50 ozs/yd<sup>2</sup>

Cutable Width : 66"

Shrinkage %: -3 & -2

**TREATMENT**

Light Wash

**COLOUR**

Indigo



**STYLING**

Ladies Denim Pant

**COMPOSITION**

70% Recycled Cotton  
+ 18.5% Tancel  
+ 11.5% polyester

**FABRIC DETAILS**

Fabric Type: Denim  
Count: Weft: 7/1, Wrap: 7/1,  
Weight : 13.50 ozs/yd<sup>2</sup>  
Cutable Width : 66"  
Shrinkage %: -3 & -2

**TREATMENT**

Dark Wash

**COLOUR**

Indigo



A close-up photograph of a person's torso wearing a white, textured knit sweater. Their hands are visible at the cuffs, holding a small green leaf and a larger brown autumn leaf. The background is blurred.

**STOP BLAMING,**

A close-up photograph of a woman with long, wavy blonde hair. She has her eyes closed and a serene expression, looking slightly upwards. The background is a soft, out-of-focus green, suggesting an outdoor setting.

**START ACTING.**





---

RECYCLED FIBERS



See how CYCLO® is preserving our  
planet through recycling cotton at

**CYCLOFIBERS.COM**



